

**A V I V A**

** ADRIA**

**ADRIA**



ASTELLA. LUXURY LINE. NEW LUXURY EXPERIENCE.

Discover more at [newastella.com](https://www.newastella.com)



# Inspiring your adventures.

OUR VISION IS FOR ADRIA TO  
BECOME THE MOST DESIRABLE  
RECREATIONAL VEHICLE BRAND.

ADRIA MOBIL HAS BEEN DESIGNING  
AND MANUFACTURING CARAVANS  
SINCE 1965, WITH OVER A HALF  
A CENTURY OF EXPERTISE AND  
PASSION APPLIED TO EVERY  
VEHICLE.

ADRIA IS RECOGNISED BY  
INDEPENDENT AWARDS FOR  
DESIGN, INNOVATION, QUALITY  
AND CUSTOMER SATISFACTION

AND OUR AIM IS TO INSPIRE YOU TO JOIN  
THE EVER-GROWING COMMUNITY OF  
ADRIA OWNERS, CREATING YOUR OWN  
MEMORABLE EXPERIENCES.

We design and develop our caravans  
by following these principles:

## **DESIGN**

We aim to inspire with caravans  
*designed for living*, with great styling,  
practicality, comfort and a feeling  
of well-being.

## **INNOVATION**

We are committed to innovation,  
with caravans *designed to perform*,  
with everything developed for your  
comfort and enjoyment.

## **EXPERIENCE**

Our caravans are *designed for you*,  
with a choice of models, layouts,  
features and a selection of textiles  
and soft furnishings.

**Adria. Inspiration for your adventures.**






# AVIVA

THE NEW GENERATION AVIVA. A RANGE OF MODERN, LIGHTWEIGHT CARAVANS, DESIGNED FOR EASY LIVING. COMBINING THE NEW GENERATION EXTERIOR PROFILE WITH THE ORIGINAL, STYLISH AND VALUE FOR MONEY CHARACTER, WHICH MADE THIS CARAVAN RANGE SO POPULAR.

Designed for easy living.



A wide-angle photograph of a modern motorhome interior. The space is compact and well-lit, featuring light wood paneling and white cabinetry. In the foreground, a bed with a white textured coverlet is visible, adorned with a pink and a yellow pillow. To the left, a kitchenette with a sink and stove is integrated into the cabinetry. In the center, a small dining table with a white tablecloth is set with a teapot and cups. A ladder is positioned against the wall, leading to an upper level. Large windows with white curtains and dark brown drapes allow natural light to fill the space. The overall atmosphere is clean, bright, and inviting.

Experience  
with all your senses

DESIGNED FOR LIVING

## DESIGNED FOR LIVING

Our caravans are carefully designed to give you a great experience when away from home, with practical and comfortable interiors. Aviva has a **home-style feeling**, with a modern, stylishly simple interior and an ambiance to put you at your ease.

Experience the **contemporary living spaces**.

The **living room** offers space and a comfort, and a light-weight put-away table, for easy additional bed set up.

| MODERN INTERIOR FOR STYLISH  
**PRACTICAL COMFORT**

| ROBUST **LIGHTWEIGHT** FURNITURE  
CONSTRUCTION

| OPTIMIZED **TEMPERATURE CONTROL**  
WITH TRUMA HEATING

| ORGANISED **INNOVATIVE STORAGE**  
THROUGHOUT

| **STYLISH AND COMFORTABLE DINETTE**

| **MODERN INTERIOR LIGHTING** AND USB  
PORTS

| CLASSICAL AND **LIGHTWEIGHT SLIDING**  
**DOORS**

| **SMART STORAGE SOLUTIONS**





Inspired and practical **kitchen** with durable worktop, integrated stove hob and sink design, plenty of storage and with high-quality appliances.

Everything is in the right place for food and drink preparation.



- | **TWO OR THREE BURNER STOVE HOB** MODEL DEPENDENT
- | **HIGH-QUALITY APPLIANCES**
- | **140 OR 90 L FRIDGE** MODEL DEPENDENT
- | **ORGANISED WORKSPACE** AND VOLUME STORAGE
- | INNOVATIVE INTEGRATION OF **REMOVABLE STORAGE BOXES**





Comfortable **bedroom** with all formats of bed for a great night's sleep, featuring easy to access beds and premium quality mattresses. Controllable lighting and storage for personal things.

Daily rituals are a pleasure, with a well-lit and ventilated bathroom, designed for space and comfort.

Our **bathroom** design, maximises the space, features a shower, toilet and wash basin, with good lighting, mirror and storage.



- | PARENT BEDS IN DIFFERENT POSITIONS OR AS SEPARATE BEDS
- | BUNKBED SETS FOR TWO OR THREE CHILDREN
- | EASY TO CONVERT DINETTE FOR ADDITIONAL BED
- | LIGHTING AND PERSONAL STORAGE SOLUTIONS

- | FULLY-FUNCTIONAL BATHROOM DESIGN
- | SMART WASH BASIN DESIGN TO OPTIMISE SPACE
- | INNOVATIVE STORAGE SOLUTIONS
- | EXTRA-HANGING WARDROBE OPTION



**Inspired solutions** throughout for a more comfortable and organised experience.

# Be comfortable, be in control.

## **LIGHTING**

Versatile lighting, includes LED, spot lights and ambient lights.

## **QUALITY MATTRESSES**

for a great night's sleep.

## **ORGANISATION**

Plentiful and innovative storage solutions in all living spaces.

## **SEATING**

Relax with comfortable, supportive seating.

## **MULTIMEDIA**

Featuring Bluetooth® amplifier sound system with loudspeakers, TV point and holder and USB ports.





Performance and  
comfort all year round.

DESIGNED TO PERFORM



DESIGNED TO PERFORM

**Inspired design** vehicles for carefree performance, practicality and comfort. Adria leads the way in caravan design.

Featuring aerodynamic profile and **Adria signature features**, for easier and more efficient towing.

| **NEW GENERATION EXTERIOR** WITH AERODYNAMIC, ELEGANT DESIGN

| **REAR WALL DESIGN** WITH LED MODULAR LIGHTS

| **PERFORMANCE CHASSIS** FOR SAFER, EASIER TOWING

| **THIRD STOP LIGHT** INTEGRATED

| **METAL HANDLES** FOR EASY MANOEUVRING

| **SMART STORAGE** FOR GAS BOTTLE AND MORE

| **AWNING LIGHT** FOR CONVENIENCE

| **INTEGRATED TENT PROFILE** FOR OUTDOOR LIVING

| **PANORAMIC WINDOW** ON AVIVA 422 PY

| **EXTERNAL CLOTHES DRYING LINE** OPTION





A close-up photograph of a dark grey, textured fabric, possibly a jacket or bag, featuring a light grey woven strap. The strap is positioned diagonally across the frame, creating a strong geometric pattern. The lighting is soft, highlighting the texture of the materials.

Your style, your choice.

DESIGNED FOR YOU



## DETAILS MAKE THE DIFFERENCE

A selection of high-quality textiles and cushion sets to complement the vehicle and your personal styling.

### TEXTILES



TOFFEE TWEED STANDARD



MAUVE DAMASK



SILVER ASH

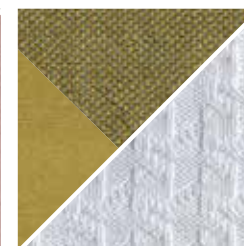


DAFFODIL DOBBY

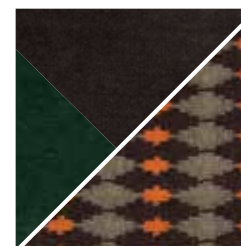
### CUSHIONS



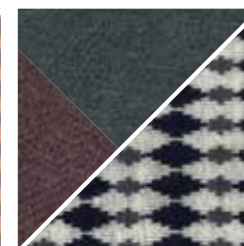
DREAM HARMONY



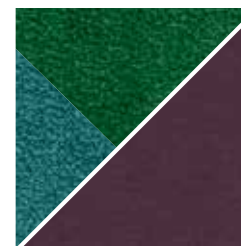
SUMMER VIBES



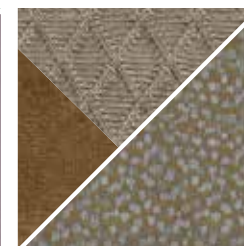
BROWNIES



GREY PLANET



MYSTIC GARDEN



WARM BROWNS

# Layouts

Available in a choice of layouts, there is sure to be one which meets your needs.

	<p><b>360 DK</b></p> <p>L 4142 mm W 2090 mm B 4+1 opt.</p>		<p><b>422 PY</b></p> <p>L 4200 mm W 2320 mm B 4</p>		<p><b>472 PK</b></p> <p>L 5174 mm W 2300 mm B 6</p>
	<p><b>492 LU</b></p> <p>L 5384 mm W 2300 mm B 5</p>		<p><b>522 PT</b></p> <p>L 5664 mm W 2300 mm B 6+1 opt.</p>		<p><b>563 PT</b></p> <p>L 6154 mm W 2450 mm B 6+1 opt.</p>

L = Body length | W = Width | B = Berths





Built to enjoy, built to last.

DESIGNED TO PERFORM





DESIGNED TO PERFORM

## Construction

Robust **body construction** and chassis integration for safer handling and optimum weight management, with **AL-KO and Knott** as our chassis partners (model and layout dependent). The combined solution of durable GFK body and performance chassis means reliable long-term performance.

With the clean lines and inspired solutions based on aerodynamic principles of our new generation caravans, experience improved air-flow and lower resistance when towing, for more efficiency.

Exclusively on Astella and Alpina caravans, Adria's unique **Complex body construction** combines the torsional strength of wood, the durability of polyurethane and the moisture-stopping properties of polyester giving reliable long-term durability and performance.

- 01 COMPOSITE WOOD PANEL
- 02 POLYURETHANE SEALING
- 03 EPS STYROFOAM
- 04 EXTERIOR POLYESTER BODY SHELL CLADDING
- 05 REINFORCED HARDWOOD PROFILE
- 06 XPS STYROFOAM INSULATION FOAM
- 07 EXTERIOR POLYESTER FLOOR CLADDING



# Climate-control

Built to **Adria Thermo-build** standards with advanced insulation materials and precision-engineered air-flow system to guarantee your comfort. Tested in our own climate chamber under **extreme conditions** from -40 to +60 degrees and humidity from 45 % to 80 %.

**Optimal heating distribution** to all living spaces with specially Adria know how engineered and integrated hot air Truma or Alde liquid central heating system. In summer comfort is assured with air-conditioning available.



# Made in Slovenia

Adria Mobil are committed to **sustainable development, preventing and reducing environmental impacts**, our environmental management system is certified to ISO14001.

Our vehicles are manufactured at our state-of-the-art ISO 9001 EFQM 5 Star certified manufacturing facilities in Slovenia, using world-class manufacturing techniques for durability, reliability and premium quality.

**'THE LARGEST, MOST MODERN RECREATIONAL VEHICLE MANUFACTURING FACILITIES UNDER ONE ROOF, IN EUROPE'.**

Vehicles are supplied with a class-leading warranty, a comprehensive parts supply and aftersales service from our extensive Adria dealer network.

2\_ Year Adria warranty

7\_ Year\* Adria Water Ingress warranty

\*Terms and conditions apply see our website for details.




**I FEEL  
SLOVENIA**

Slovenia  
Your caravanning destination  
[www.slovenia.info](http://www.slovenia.info)



Inspiration for *your* adventures.

 FIND YOUR INSPIRATION AT [www.adria-mobil.com/inspirations](http://www.adria-mobil.com/inspirations)

Join us on    to share your adventures.



**ADRIA MOBIL, d.o.o.**

Straška cesta 50  
8000 Novo mesto  
Slovenia

Tel. +386(0)7 393 71 00  
info@adria-mobil.si  
[www.adria-mobil.com](http://www.adria-mobil.com)

Printed and published: August 2023

Notices: The purpose of the catalogue is illustrative. Pictures inside the catalogue may include some elements not belonging to standard equipment or portray to products belonging to different markets. Products may change from technical or commercial points of view and in respect of regulations. Please contact your selected Adria dealer to obtain detailed information before purchasing.

Published by: Adria Mobil, d.o.o.; Art Direction: PM2; Production: Enigma d.o.o.; Photography/Cover photo: Branko Čeak, Jože Maček, Jure Horvat, Styling: Nataša Mandelj Čeak; Lifestyle photos: Francesco Zanet, Simone Benedetti, CJ Studio d.o.o., Shutterstock, iStock, themediumgray.com; Styling: PM2, Claudia Barberi. Renders: Inpac d.o.o.; Copy: Neil Morley; Lithography: Tomo Per; Thanks to: Müller, Amfibija, My Dream Journey, Malí raj; Printed by: Printera Grupa d.o.o.